

# ALL-COUNTY JAZZ DRUM-SET AUDITION

BE PREPARED TO PLAY EXAMPLES OF THE FOLLOWING

STYLES:

1. SWING STYLE.. JUDGES MAY ASK YOU TO PLAY THE KISSIMMEE BLUES CHART FOR THIS.
2. SHUFFLE STYLE
3. BOSSA NOVA LATIN STYLE
4. ROCK STYLE
5. CALL BACKS WILL BE ON THE SWING TUNE "KISSIMMEE BLUES" IF NECESSARY.

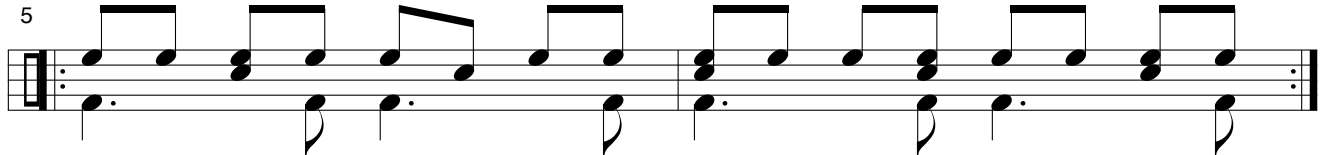
SWING!



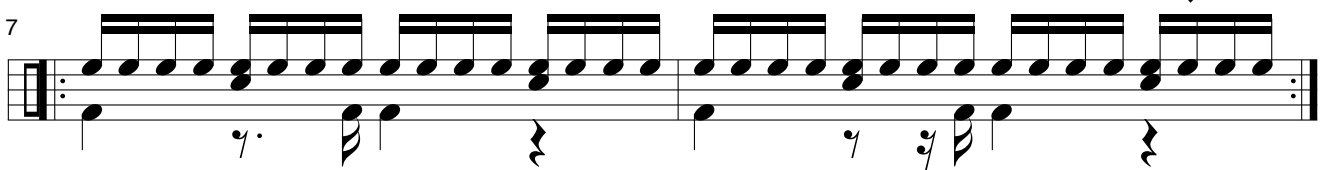
SHUFFLE



Bossa Nova



ROCK



DRUMMERS ARE TO PLAY THE STYLES IN 8 BAR PHRASES, MOVING FROM ONE STYLE TO ANOTHER. AS YOU MOVE FROM ONE STYLE TO THE NEXT, PLEASE "SET UP" THE NEW STYLE WITH A "FILL" IN THE NEW STYLE. ALSO, DRUMMERS, PLEASE REMEMBER THAT THE ABOVE GROOVES ARE JUST SUGGESTIONS, WE ARE LOOKING FOR STUDENTS THAT CAN TAKE THESE BASIC GROOVES AND "FILL THEM UP" AND EMBELLISH THEM TO SOUND LIKE JAZZ.

# KISSIMMEE BLUES

All-County Jazz Audition Material

RUSS WEAVER

Swing!

Click Track

Ride or HH

Time

cross stick

1.

2.

Fill inbetween these figures!

3

Fill!

Time!

Fill!

Students are to begin with the pick-up's to bar 3. Wait for the click-track to count you in and then perform. The form of this tune is AABA which means that the first "A" section (12 bars) is repeated then on to the bridge or "B" section and finally ending with another "A" section. Once you are done with the form, the form is repeated. Remember the form begins at bar 3 (not bar 1) and make sure to play a "different" type of swing for both each section of the tune as well as for both choruses. Suggestions include 1st X on the "A" section might be a swing Hi Hat Groove with a "Basie-Style" LH on the HH stand followed by a traditional Ride Cymbal groove on the Bridge ("B" section) coming back to the HH Groove to finish out the first chorus. The 2nd chorus might go straight to the Ride Cymbal and focus a bit more on the LH on the snare. Perhaps play it like a shout chorus with some "chopping wood" on 2 and 4 on the "A" section and some brilliant fills and kicks on the bridge. Make sure to fill into the final kick on the end of 4. You will hear this on the recorded track.

Scoring		
Time	( 10 )	Score _____
Rhythms	( 32 )	Score _____
Swing	( 10 )	Score _____
Shuffle	( 10 )	Score _____
Bossa	( 10 )	Score _____
Rock	( 10 )	Score _____
Fills	( 18 )	Score _____
<b>Totals</b>	<b>( 100 )</b>	<b>Score _____</b>